

# Weed Management in Pecan



W.E. Mitchem

Extension Associate

N.C. State Univ., Univ. of GA, and Clemson Univ., Cooperatively

Dept. of Horticultural Science

N.C. State University



## PRE Newly Planted and Established Orchards

- Chateau (6 to 12 oz)
  - Use 6 oz on sandy soils
  - Newly planted trees should be painted
  - Use hooded application equipment in bearing orchards
  - DO NOT tank mix with glyphosate in young planting after bud break
- Surflan or Oryzalin (2 to 4 qts/A)
  - Allow soil to settle after transplanting
- Prowl H<sub>2</sub>O (2 to 4 qt/A)
  - Allow soil to settle after transplanting



**PROWL**H<sub>2</sub>O<sup>®</sup>  
herbicide

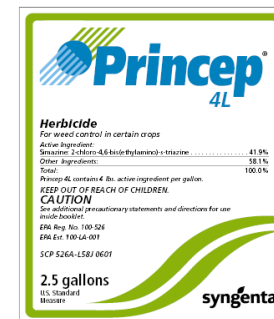
## Newly Planted and Up to Three Year Old Trees

- Start with clean weed-free strip at planting
- Once planting is complete
  - Paint trunk with exterior white latex paint
- Apply Chateau @ 8 oz/A
  - Allow soil to settle after transplanting
  - In weed-free soil no POST herbicide will be needed
- Apply 2<sup>nd</sup> application of Chateau @ 8 oz/A
  - Approx. 60 to 80 days after initial application
  - Apply when emerging weeds are 2 to 3” tall
  - Tank mix with paraquat or glufosinate for POST weed control
- Bermudagrass or Johnsongrass will have to be controlled POST
  - Fusilade, clethodim, or Poast



# PRE for Established Orchards

- Alion (3.5 to 6.5 fl. oz/A)
  - Trees est. 3 years
  - 14 day PHI
  - 30 days between sequential applications
- Karmex or Diuron 80 DF (2 to 4 lbs/A)
  - Trees est. 3 years
  - Sandy loam soils: 2 lbs/A
- Matrix or Solida or Pruvion or Grapple (4 oz/A)
  - Trees est. 1 year
  - 14 day PHI
- Princep or Simazine 4L (2 to 4 qts/A)
  - Trees est. 2 years
  - Sandy loam soils: 2 qts/A
  - DO NOT apply when nuts on ground in fall
- Solicam (2.5 to 5 lbs/A)
  - Trees est. 6 months or longer
  - DO NOT apply when nuts on ground in fall
  - 60 day PHI
- Pindar GT (1.5 to 3 pts/A)
  - Apply after harvest up until emergence of green tissue in the spring
  - Trees est. 9 months or longer



## Herbicide Programs in Pecan Trees

### Established 3 years or longer

- Alion SEQ program
  - Later winter apply Alion @ 3.5 fl. oz + Gly or Glu + 2,4-D amine
  - Approx. 90 or more days later apply Alion again @ 3.5 fl. oz + Glu or Para
- Pindar GT Programs
  - Late winter (prior emergence of green leaves) apply Pindar GT @ 2 to 3 pts + Gly or Glu
  - 60 to 80 days later apply Glu or Para with:
    - Alion @ 3.5 fl. oz
    - Karmex @ 2 lb + Rimsulfuron @ 4 oz
- Chateau SEQ Program
  - Late winter apply Chateau @ 8 oz + Gly or Glu
  - 60 to 80 days later apply Chateau @ 8 oz + Glu or Para
- Rimsulfuron/Oryzalin SEQ Program
  - Later winter apply Rimsulfuron @ 4 oz + Oryzalin @ 2 qt + Gly or Glu
  - 60 to 80 days later apply Rimsulfuron @ 4 oz + Oryzalin @ 2 qt + Glu or Para

**Apply Paraquat or Glufosinate  
prior to harvest if needed**

# Non-Selective POST Herbicides

- Glyphosate

- Roundup PowerMax @ 22 fl. oz/A
- Generic 4 lb Glyphosate @ 1 qt/A
- Generic 5 lb Glyphosate
- Try to limit applications
- Avoid use in newly planted vineyards



- Paraquat

- Gramoxone SL @ 3 pt/A
- Generic paraquat @ 2 pt/A
- Use 80:20 NIS @ 0.25% v/v

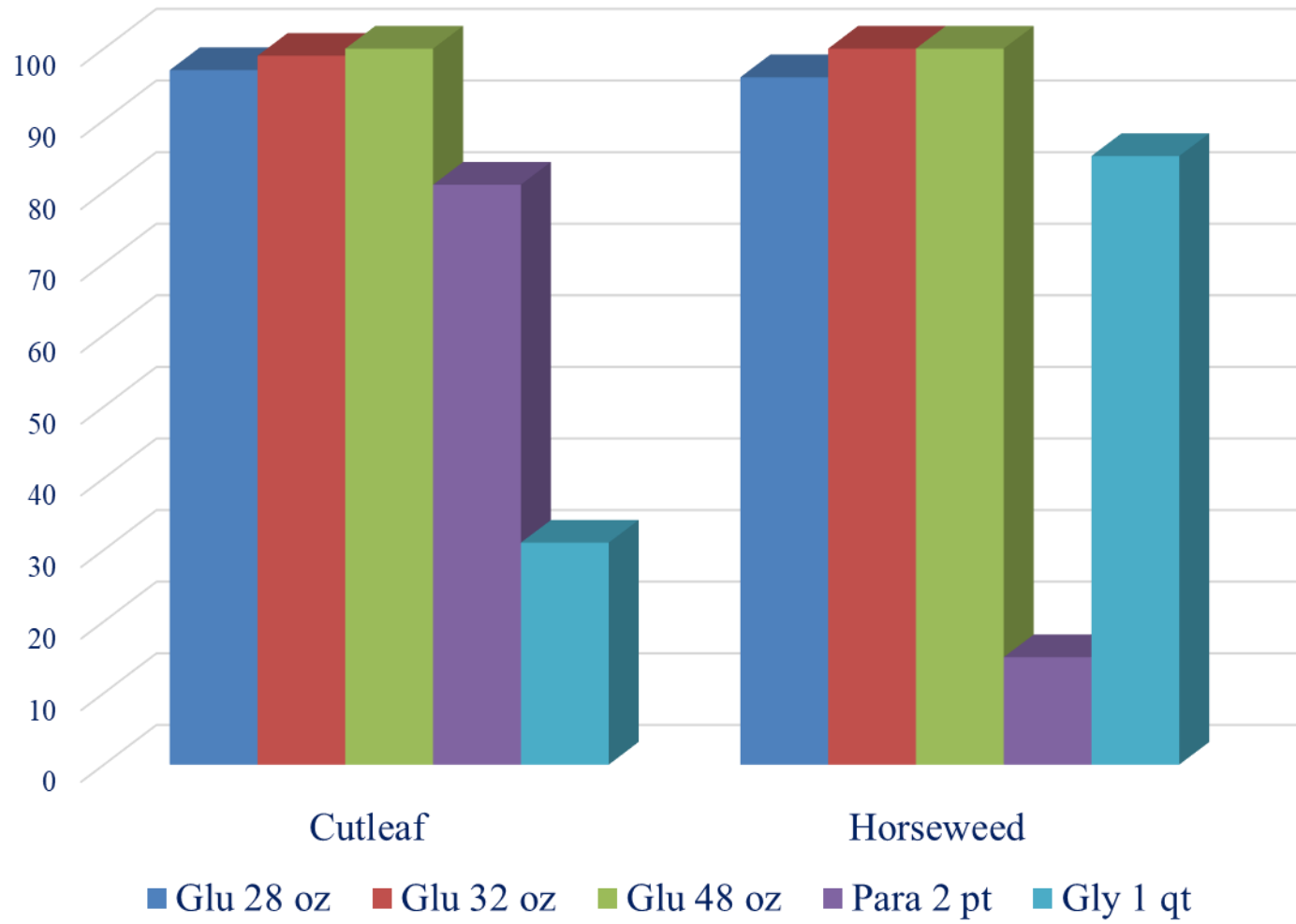


- Glufosinate

- Rely @ 32 to 48 oz/A
- Use with AMS
- No surfactant needed
- Generic formulations are in the market place
  - Reckon
  - Lifeline
  - Cheetah
  - Surmise



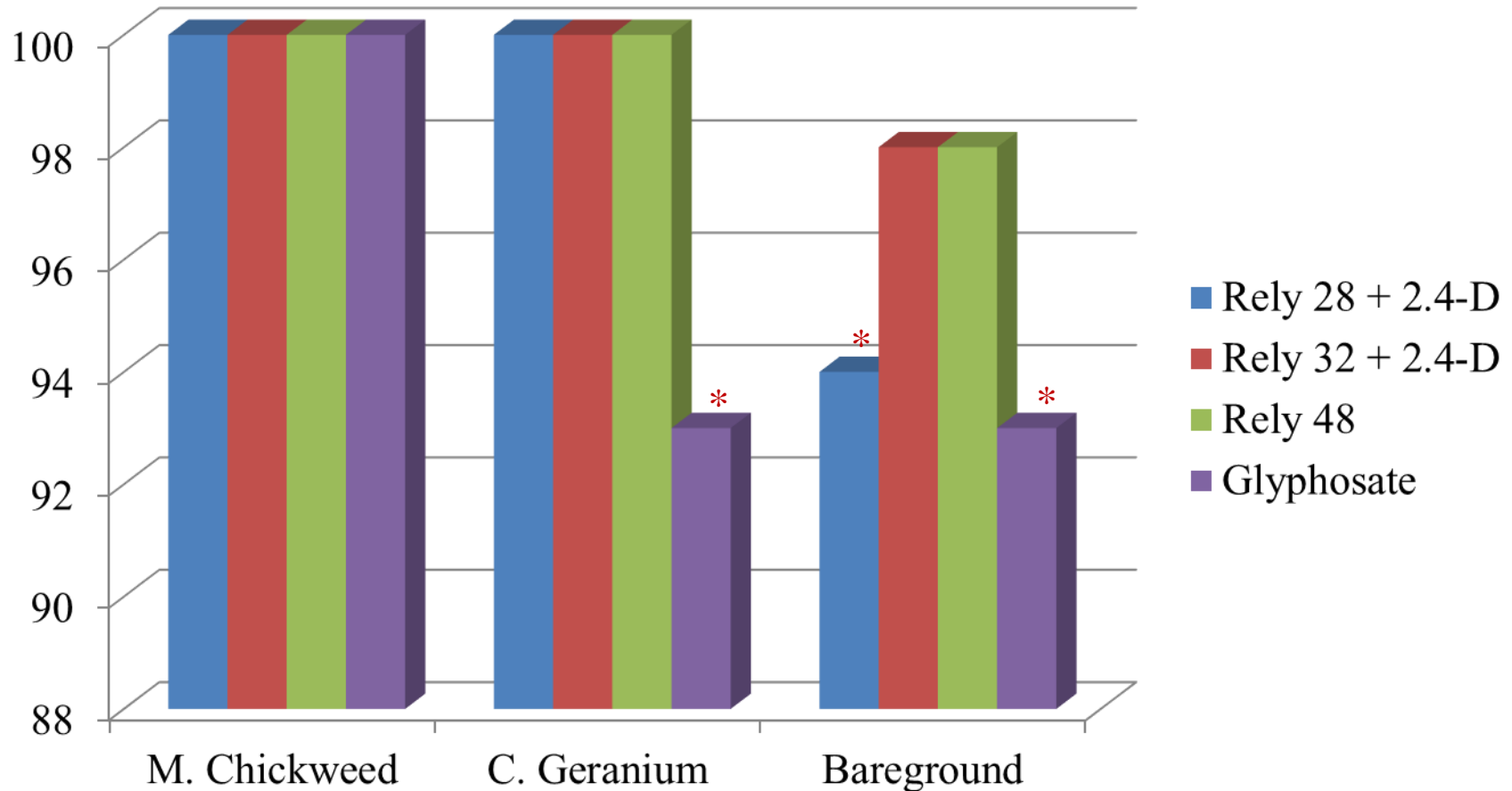
### POST Weed Control with Reduced Rates of Glufosinate 14 DAT



**Research in NC and SC has shown 32 fl. oz of a Glufosinate herbicide to be very effective**

# Reduced Rate Glufosinate Tank Mix Trial

19 DAT



2,4-D @ 1.5 pt/A



# Bermudagrass

- Perennial
- Thin leaves, erect hairs on collar region
- Root at stem nodes
- Spreads via stolons and rhizomes

*Control – Poast 1.5 pt (6”) fb 1 pt (4”), Fusilade 1.5 pt (8”) fb 1 pt (8”); Always include COC with Poast and Fusilade*

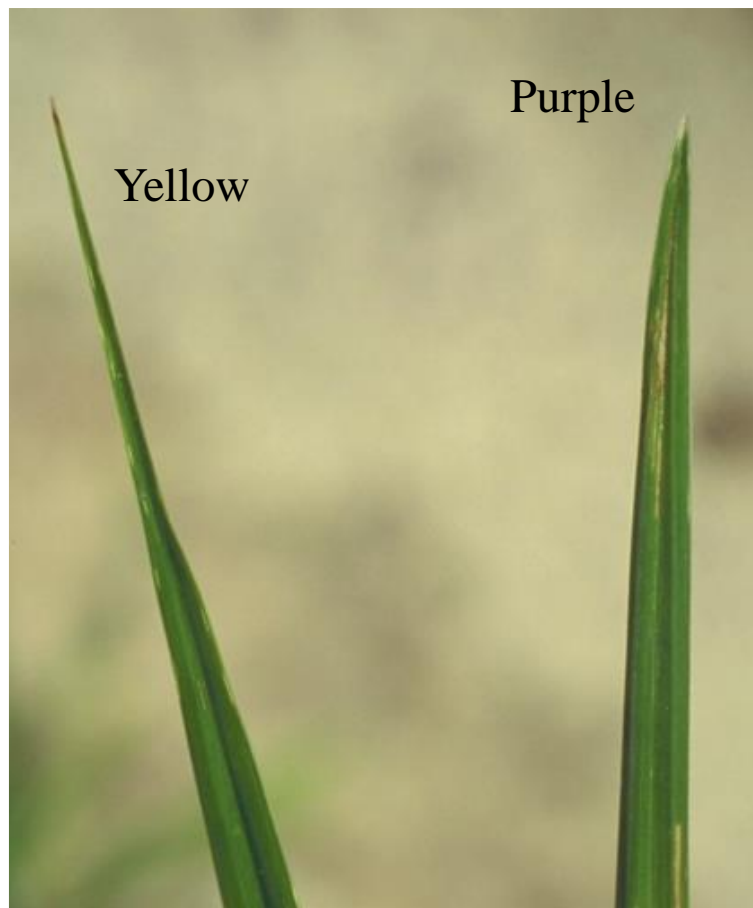


Photos Courtesy of Virginia Tech and UC Davis, Univ. Missouri



## Bermudagrass Control

- Fusilade – 30 day PHI
  - 1.5 fb 1.0 pt/acre
- 1st application 8” of new growth
- 2nd application when 8” of regrowth occurs



## Yellow and Purple Nutsedge Control

- Sandea 75 DG
  - 1 oz when nutsedge is 3 to 4” tall
  - Repeat application if necessary
  - Use with NIS
  - Can be tank mixed with glyphosate

# Questions

